

Cordless 1/2" Cellular Shade Installation Instructions



Cordless 1/2" Cellular Shade

Installation Instructions

Feature/Benefit

- Ships in 5 days – after 72 hour cancellation period
- Improved thermal insulation due to the larger 1/2" honeycomb shaped cell – 41% energy-saving factor
- Utilizing both light filtering and black out throughout the home
 - Same 10 colors available for light filtering and blackout
 - No dramatic differences in color appearance
 - Mirage uses the same material on the face of both light filtering & black out shades
- White to street
- Upscale cordless lift option
- New bottom rail handle design
- Semi-gloss finish **steel head rail & bottom rail** – color coordinated to match shade
- Single continuous shade maximum: 72"W x 84"L
- Connector device option for extra wide widths (72"-144 1/4")

Standard Factory Deductions

- Outside Mount: no deductions (the shade is made to the customers exact dimensions)
- Inside Mount: factory takes 3/8" deduction (3/16" each side for a total of 3/8")

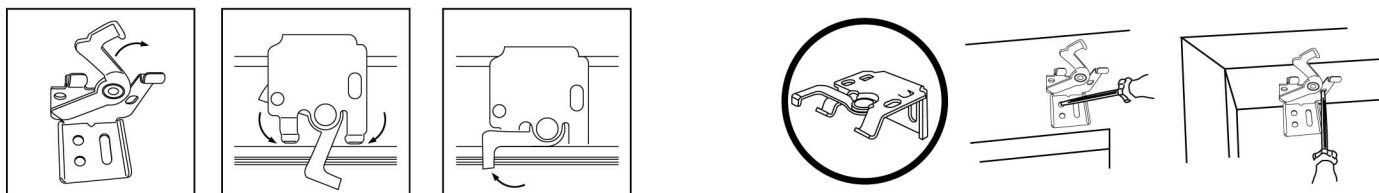
Minimum/Maximum Sizes

Minimum width 19" Maximum width (single shade) 72"
Minimum length 24" Maximum length 84"

Minimum Depth Required for Inside Mount

Inside Mount 1 3/8"
Inside Flush Mount 2"

Installation



Concealed Brackets lock-on to head rail – can be top mounted or rear mounted only

Cordless 1/2" Cellular Shade Installation Instructions

Stacking Chart

Shade Height	24" L	30" L	42" L	54" L	66" L	72" L	78" L	84" L
Cordless Single Shade Light Filtering	2 1/2"	2 5/8"	2 3/4"	2 7/8"	2 3/4"	3"	3 1/8"	3 1/4"
Cordless Single Shade Black Out	2 5/8"	2 3/4"	2 7/8"	3"	3 1/8"	3 1/4"	3 3/8"	3 3/8"

Two Connected Shades

Two shades joined by a connector device – for extra wide widths (over 72"W):

- This feature allows 2 shades to operate independently, joining the two head rails by a clear connector device
- For shades between 72" – 144 1/4", provide the left shade size & the right shade size (note: there will be a 1/4" fixed gap between these shades)
- LEFT shade + RIGHT shade + 1/4" fixed GAP = TOTAL WIDTH
- Great when covering a wide expanse
- Provides seamless look
- Easy to install

Measuring instructions for wide widths:

- Measure the overall width of the window to be covered
- Measure the exact width of the area each shade is to cover. Measure and specify the left shade first
- Allow for a 1/4" gap between shades
- The total width of all shade including the fixed 1/4" gap must equal the overall width
- Minimum width is 19" per shade
- Maximum width is 72" total for a single shade – or up to 144 1/4" total if connecting two 72" shades

Care Instructions

- Maintenance: Dust regularly using a feather duster or vacuum lightly using the upholstery attachment
- Dirt Removal: Spot clean using a soft cloth or sponge, mild detergent and lukewarm water. Apply gingerly, taking care not to crush or crease the fabric. Remove excess water by blotting with a clean, dry towel. Do not use spot removers.
- Dry Cleaning and ultrasonic cleaning are not recommended and are not covered under the warranty.