

## ALTERNATIVE CLUTCH SETUP

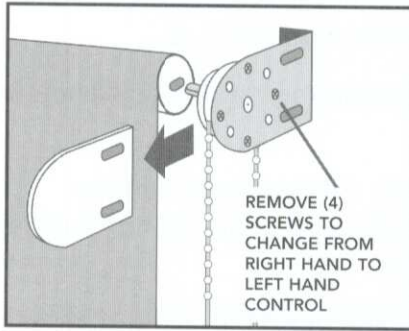


Figure 10

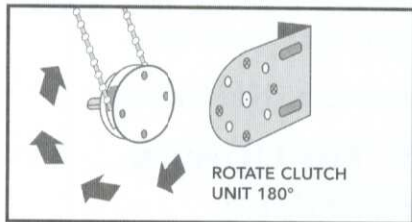


Figure 11

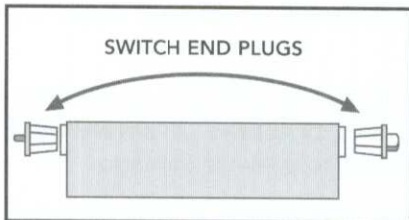


Figure 12

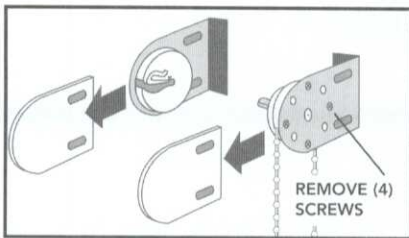


Figure 13

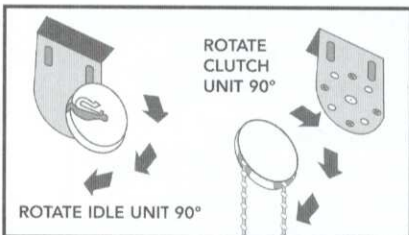


Figure 14

Your shade will require a non-standard installation if:

- 1) you are changing the chain to the **left side** of the shade,
- or 2) if you are mounting your shade from the **top/ceiling**.

**NOTE:** If you purchased a custom shade or are doing a standard installation, you do **NOT** need to make these changes.

### CHANGING TO A Left-hand Chain Control

If you want your chain to be on the left side of your shade, you will need to make a simple change to your Clutch Unit before you install your shade. To make this change, start by sliding off the Bracket Cover on the Clutch Unit (Fig. 10). Remove the four screws.

Turn the unit 180 degrees so the chain can now hang down from the left side (Fig. 11). Put the screws back in, and slide the Bracket Cover back on. No change is needed to the Idle End Unit, it works for right and left mounts. Pull out both End Plugs from the tube and switch them (Fig. 11).

### CHANGING TO A Top/ceiling Mount

If you want your Clutch Unit to hang from the top (for example, the ceiling), you will need to make a simple change to your Clutch Unit and Idle End Unit before you install your shade. To make this change, start by sliding off the Bracket Covers on both the Clutch Unit and Idle End Unit (Fig. 13). Remove the four screws from both brackets. Turn the Clutch Unit 90 degrees so the chain hangs straight down if the Clutch were hanging from the top, and turn the Idle End Unit so the opening is facing away from the window. (Fig. 14). Put screws back in, and slide the Bracket Cover back on.

## Maintenance

Your solar shade has been made of the finest materials and, when properly cared for, will last a very long time. To clean your shade, simply rinse with water, scrub with soap or any non-abrasive cleaner, rinse and allow to dry. Call us for missing parts or mechanical problems. Do not store shade wet. In moist areas roll shade down frequently to air dry.

**Caution: Use of solvents or abrasive cleaners may damage the fabric and will void your warranty. Do not use Bleach**



Gale Pacific USA, Inc.  
P.O. Box 951509  
Lake Mary, FL 32795-1509  
tel. 800-560-4667 fax. 407-333-7716  
www.coolaroo.com