



**Cordless**  

---

**RomanStyle**  

---

**FabricShade**

owner's handbook



# **WARNING**

---



---

Inner cords can pull out to form a loop, which can STRANGLE a young child.

- Children can climb furniture to access inner cords. Move cribs, playpens, and other furniture away from window coverings.

**Cordless**  
Roman  
**Style**  
Fabric  
**Shade**

**INSTALLATION INSTRUCTIONS**

**Step 1. Check Package Contents**

Missing part? Call 800-505-1905

Mounting hardware kit includes the following:

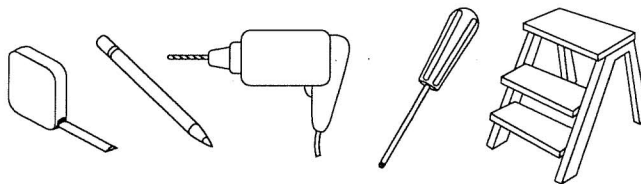
Part	Quantity
a	Mounting Bracket 2 (shades 23" to 47" wide) 3 (shades 48" wide)
b	1 1/8" Screws 8 (shades 23" to 47" wide) 12 (shades 48" wide)
c	Handle 1

[Note: one extra screw of each noted size is included for convenience]

**Step 2. Tools Required**

Screwdriver, tape measure, pencil, drill, step ladder.

Note: use #6 plastic anchors for dry wall or plaster mounting (not included).



Drill Bits: for screws, use a 3/32" drill bit - for wall anchors, use 1/4" drill bit.

**Step 3. Bracket Location and Installation**

Your shade may be installed either inside the window frame or outside the window frame.

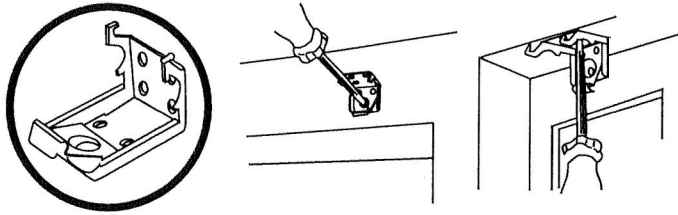
A mounting bracket should be positioned about 1" to 6" from each end of the head rail. For wider shades that require 3 or more brackets, these should be spaced evenly between the two outermost brackets. Always position the brackets such that there is no interference with the cords and mechanisms inside the head rail. The procedure outlined below will assure proper bracket placement.

**For Outside Mounting:**

Clip the brackets onto the head rail as described above. Hold the shade level at the height desired and center it over the window opening. Mark the exact location of each bracket with a pencil. Remove the brackets from the head rail and position the top of each bracket at the marked location and screw each bracket into the wall or window molding using the 1 1/8" screws, predrill the screw holes using a 5/64" drill bit.

**For Inside Mounting:**

Clip the brackets onto the head rail as described above. Hold the shade in place and make a pencil mark at the rear of each bracket where it contacts the inside of the window frame. Remove the brackets from the head rail and align them with the marks. Attach each bracket using the 1 1/8" screws, predrill the screw holes using a 5/64" drill bit.

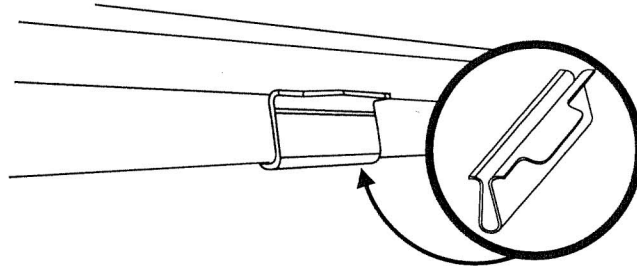


---

**Step 4. Securing the Head Rail**

Lift the head rail into position such that the front edge of each bracket is under the inner front edge of the head rail. Push the head rail upward until the flexible tab at the bottom of each bracket snaps onto the back of the head rail. Check carefully to assure that each bracket is properly secured.

**Step 5. Attach Handle / How to Operate**



---

Attach the handle to the bottom of the shade as illustrated. The handle is designed to minimize contact with the shade fabric. Always raise and lower the shade slowly to assure that the fabric gathers neatly.

To lower the shade: grip the handle and slowly pull straight down.

To raise the shade: put one hand under the handle (palm facing up) and lift slowly until the desired height is reached.

**CLEANING YOUR SHADES**

To clean the shade fabric, use a feather duster or vacuum lightly using the soft brush attachment. If heavy cleaning is required, please consult a professional drapery cleaning service.

## **REPLACEMENT PARTS**

In the event that replacement parts are ever needed, you may call:

Please be sure to provide the following information, if possible:

- The complete model or catalog number of your product
- A description of the product
- A description of the part needed

## **ONE YEAR LIMITED WARRANTY**

I. What is warranted and for how long:

For a period of one (1) year from the date of purchase, will replace this window covering with one of equal or superior value, if this window covering is found to be defective in material or workmanship.

II. What is not covered by this Warranty:

This warranty does not cover removal or installation of any window covering.

This Warranty does not cover damage or defects caused by or resulting from improper maintenance, negligent or improper use, abuse, misuse, neglect, accidents, act of God, alteration, commercial use, installation, removal or reinstallation.

This Warranty is restricted to normal consumer use within the United States.

WILL NOT BE LIABLE FOR INCIDENTAL OR CONSEQUENTIAL DAMAGES, SOME STATES DO NOT ALLOW THE EXCLUSION OR LIMITATION OF INCIDENTAL OR CONSEQUENTIAL DAMAGES, SO THE ABOVE LIMITATION OR EXCLUSION MAY NOT APPLY TO YOU.

III. How to obtain warranty service:

To obtain warranty service, simply return this pleated shade to the nearest

IV. This Warranty gives you specific legal rights, and you may also have other rights which vary from state to state. For the address or telephone number of the nearest in your area, refer to your local telephone directory or write to:

**Cordless**  
**Roman**  
**Style**  
**Fabric**  
**Shade**